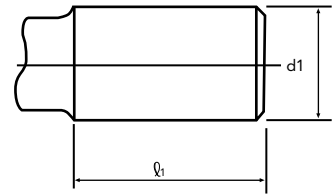


Características Dimensionais das Hastes Cilíndricas Dimensional Features of Parallel Shanks

1. Haste Cilíndrica  
 DIN 1835 FORMA A

Plain Parallel Shanks  
 DIN 1835 FORM A



d1	h8	4	5	6	8	10	12	16	20	25	32	40	50	63
l1	+2 0	28	28	36	36	40	45	48	50	56	60	70	80	90

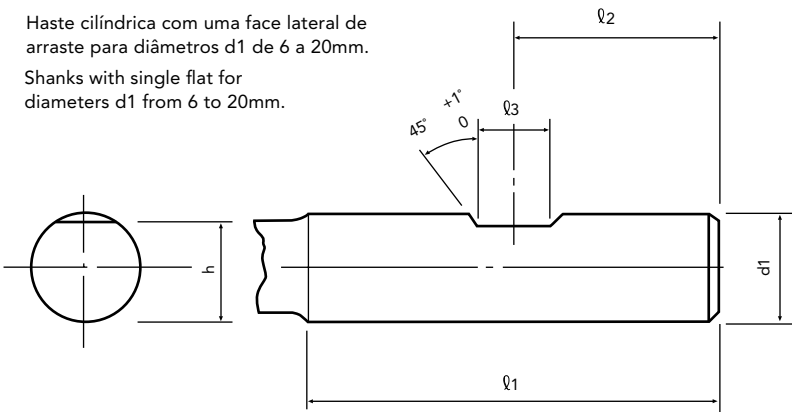
Unid.:mm

2. Haste Cilíndrica com uma Face Lateral de Arraste  
 DIN 1835 FORMA A

Flatted Parallel Shanks  
 DIN 1935 FORM B

Haste cilíndrica com uma face lateral de arraste para diâmetros d1 de 6 a 20mm.

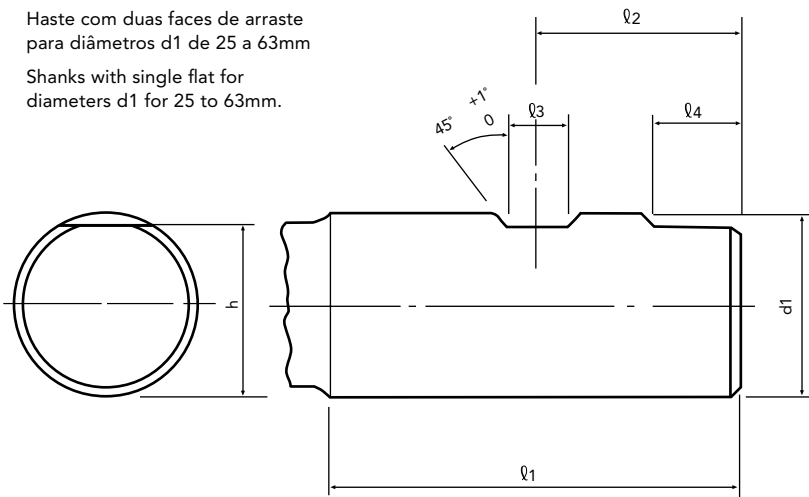
Shanks with single flat for diameters d1 from 6 to 20mm.



d1 h6	l1 +2 0	l2 0 -1	l3 +0,05 0	l4 +1 0	h h13
6	36	18	4,2	-	4,8
8	36	18	5,5	-	6,6
10	40	20	7	-	8,4
12	45	22,5	8	-	10,4
16	48	24	10	-	14,2
20	50	25	11	-	18,2
25	56	32	12	17	23
32	60	36	14	19	30
40	70	40	14	19	38
50	80	45	18	23	47,8
63	90	50	18	23	60,8

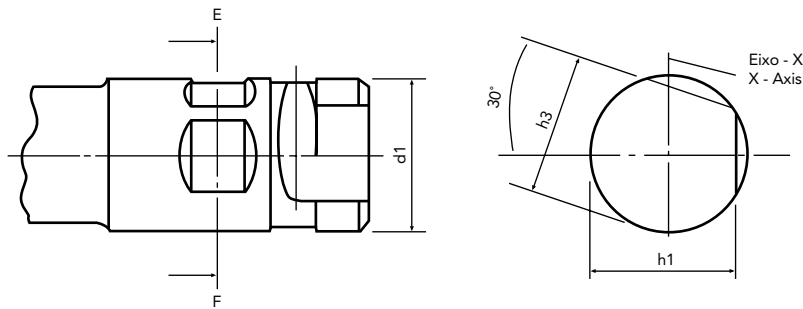
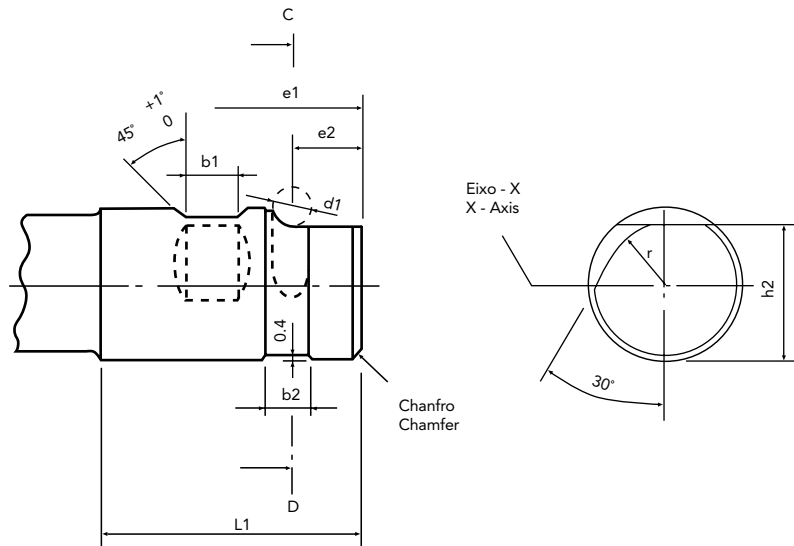
Haste com duas faces de arraste para diâmetros d1 de 25 a 63mm

Shanks with single flat for diameters d1 for 25 to 63mm.



Características Dimensionais das Hastes Cilíndricas para Fixação tipo Baioneta Dimensional Features of Combination Shanks

FORMA C  
 FORM C



Unid.:mm

d1 h6	b1 ±0,05	b2 +0,5 0	e1 0 -1	e2 +0,5 0	d1 f8	h1 h13	h2 f9	h3 h13	L1 +2 0	r
40	14	12	40	17	10	38	35	36	70	15
50	18	14	45	21	12	47,8	44	45	80	19
63	18	14	50	21	12	60,8	57	58	90	25,5